

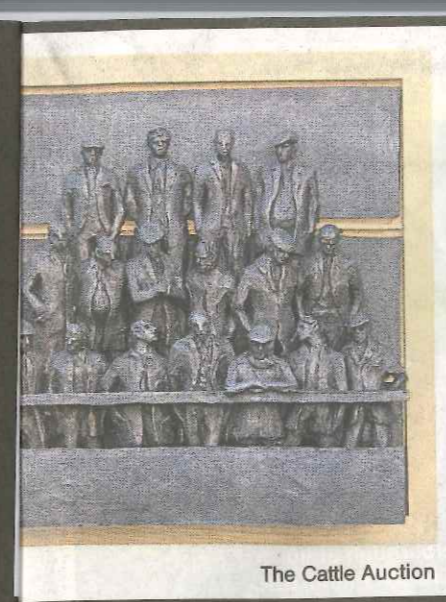
Best Friends by Harriet Francis



Maidens by Angie Day



Pelican by Susan Nicholson



The Cattle Auction



Glass sculpture by Joe Scabbo



Head of a cheetah by Carol Orwin



Glass sculpture by Joe Scabbo



Awakening by Henriette Van Der Does

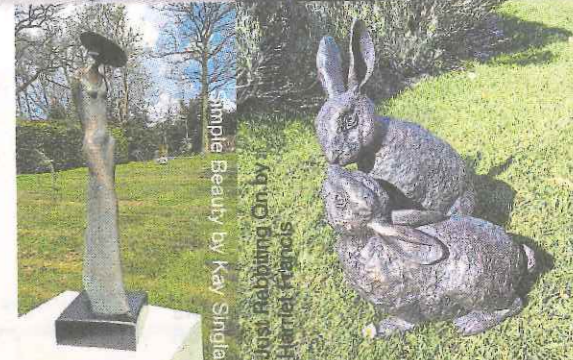
BEAUTY AROUND EVERY CORNER

Sculptors return to Beaulieu for sixth outdoor and indoor exhibition

Talented emerging and established sculptors from across the south of England will be returning to Beaulieu to create the Surrey Sculpture Society's sculpture trail this summer. Winding through the beautiful gardens and parkland that surround Beaulieu Abbey and Palace House, with smaller sculptures on display inside, the exhibition will open on May 25 and run until August 11. The Surrey Sculpture Society (SSS) returns to the New Forest for its sixth exhibition at the venue. Henriette van der Does, chairman of the SSS, commented: "The Surrey Sculpture Society is delighted to be invited back once again to Beaulieu. This prestigious location, with its attractive gardens provides the perfect setting for our artists' work and we value the collaboration with Beaulieu. Visitors will see a wide variety of work from small to large pieces, and in a broad range of materials. There is something for everyone to enjoy, with all sculptures for sale." Visitors to Beaulieu will discover figurative, animal and abstract sculptures along the trail from the Ornamental Victorian

Kitchen Garden to the serenity of the Millpond Walk by the River Beaulieu. Further sculptures will be on display inside the historic gothic-style Palace House. The sculptures will range from traditional to contemporary styles, offering broad appeal to suit all tastes and budgets. Commenting on the return of the Surrey Sculpture Society to Beaulieu, Lord Montagu said: "I am delighted to welcome the Surrey Sculpture Society back to Beaulieu to exhibit a really interesting range of different works. Palace House and the gardens are the perfect backdrop for the society's sculptures, which are greatly enjoyed by the thousands of visitors who come here each summer." The exhibition will be open from 10am daily and entry is included in the Beaulieu admission ticket, which also includes entry to the National Motor Museum, Palace House, Beaulieu Abbey, Secret Army Exhibition, World of Top Gear and On Screen Cars.

■ Tickets can be bought in advance online at beaulieu.co.uk or by calling 01590 612345.



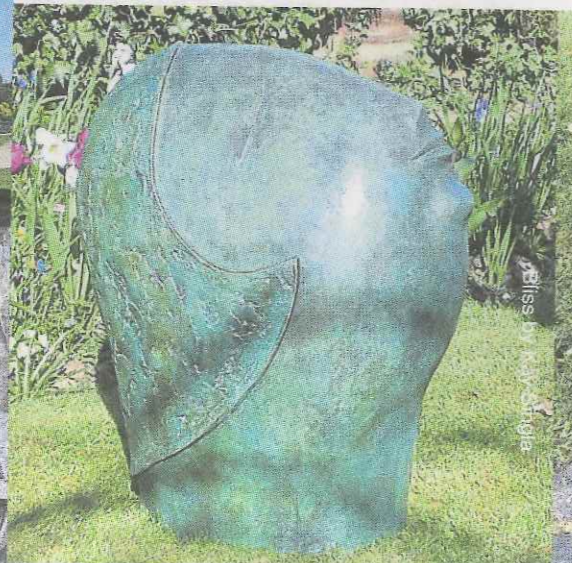
Simple Beauty by Kay Sirdia



Figure XVIII by Henriette Van Der Does



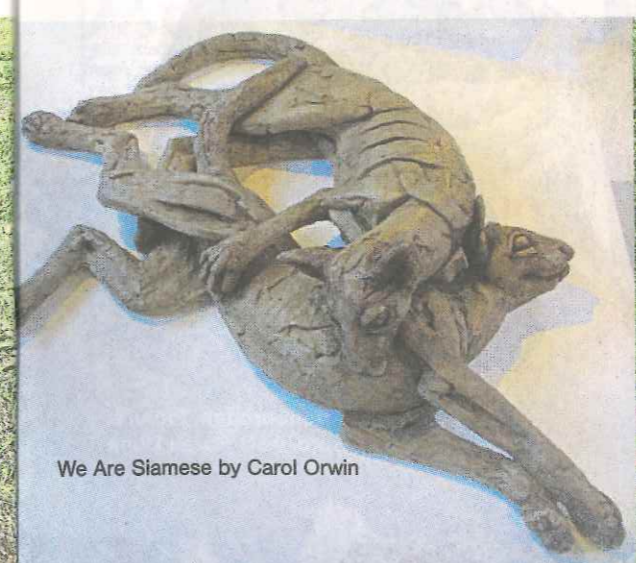
Palace House



Spring Preening by Harriet Francis



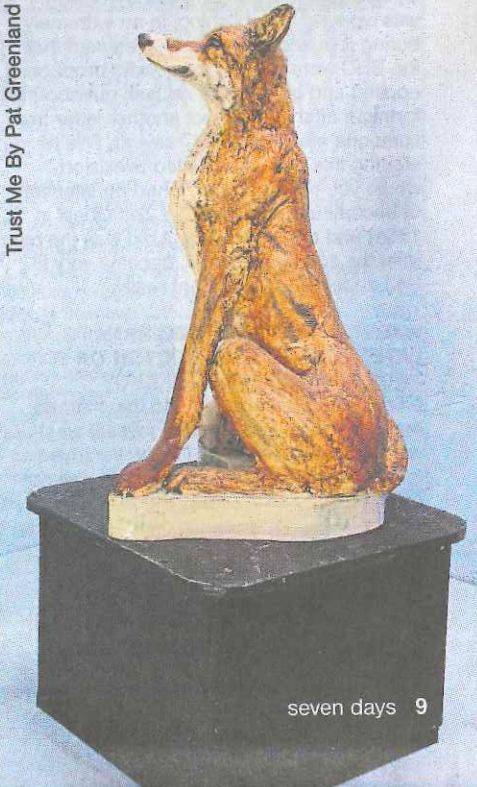
We Are Siamese by Carol Orwin



Trust Me By Pat Greenland



Own by Carol Orwin



seven days 9